



Setting the Home Folders of Mac OS X Domain Users on the SAN

<i>Introduction</i>	2
<i>Requirements</i>	2
<i>Configuring Workgroup Manager</i>	2
<i>Configuring the Home Folder of a Domain User to Be on The SAN</i>	3
<i>Known Limitations</i>	6

Introduction

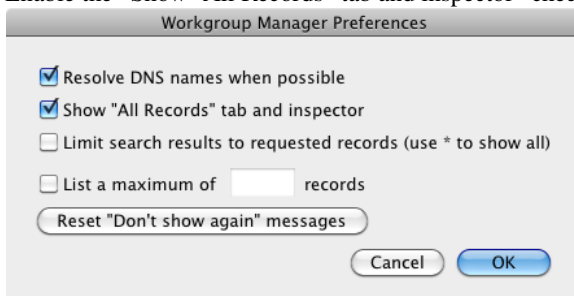
If your Mac OS X SAN members are part of a domain controlled by Mac OS X Server, you can set up the home folders of domain users to be on the SAN and thus to provide them with fast access through the Fibre Channel instead of the Ethernet. This scenario will guide you through the steps of creating a new domain user and setting this user's home folder to be on the SAN.

Requirements

- metaSAN 4.x for Mac OS X is installed and activated on all machines;
- the Metadata Master runs Mac OS X Server 10.5.8 or above and is set up as Open Directory master;
- File Security must be enabled in the definition containing the SAN volume on which the home folders will be stored;
- “Show “All Records” tab and inspector” should be enabled in Workgroup Manager on the Metadata Master computer. For details, see “Configuring Workgroup Manager” on page 2.

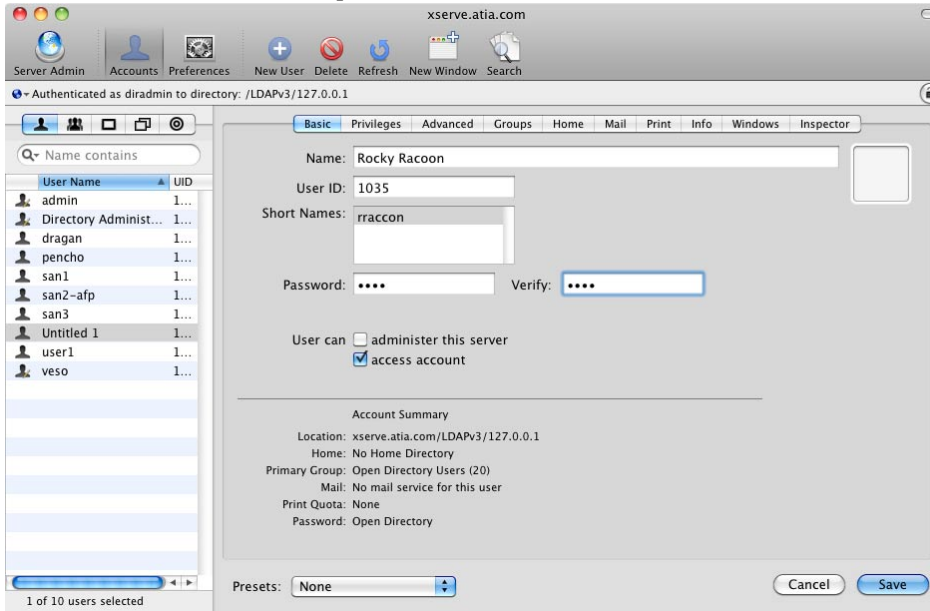
Configuring Workgroup Manager

1. On the Metadata Master, go to Applications | Server | Workgroup Manager.
2. Open Preferences.
3. Enable the “Show “All Records” tab and inspector” check box and click OK.



Configuring the Home Folder of a Domain User to Be on The SAN

1. In Workgroup Manager, click New User.
2. Enter the name, short name and password of the new user.

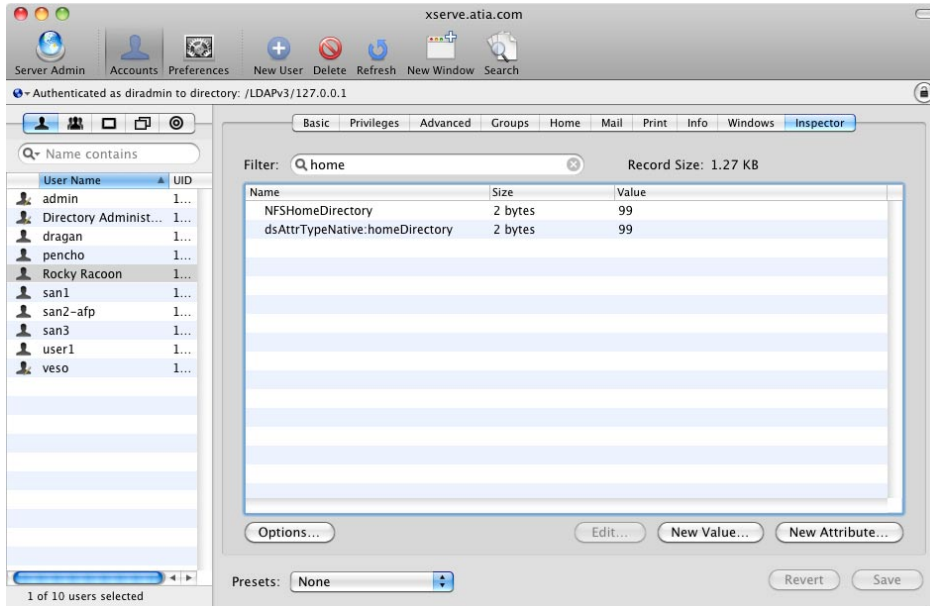


Warning: Do not configure a home folder in the Home tab!

3. Select the user in the left pane and go to Inspector tab.

Setting the Home Folders of Mac OS X Domain Users on the SAN

4. Using the filter, display the results for 'home'.



Usually two items appear:

NFSHomeDirectory

and

dsAttrTypeNative:homeDirectory.

5. Select the first item and click Edit.

Configuring the Home Folder of a Domain User to Be on The SAN

6. In the Text field, replace the existing path with the POSIX path to the new home folder on the SAN volume.

Attribute Name: dsAttrTypeStandard:NFSHomeDirectory

Text:

/Volumes/strip1/SANHome/tracon

Hexadecimal:

2f566f6c 756d6573 2f737472 697065531 2f53414e 406f6d65 2f727261 636f666e

Search in Text

Load From File... Refresh Cancel OK

Tip: You can get the POSIX slash-style path name in the Terminal.

Note: If the specified folder doesn't exist on the SAN volume, it will be automatically created.

7. Click OK.
8. Repeat the above steps for the second item in the results filtered for “home”.
9. Click Save.
10. Start Terminal.
11. Type:

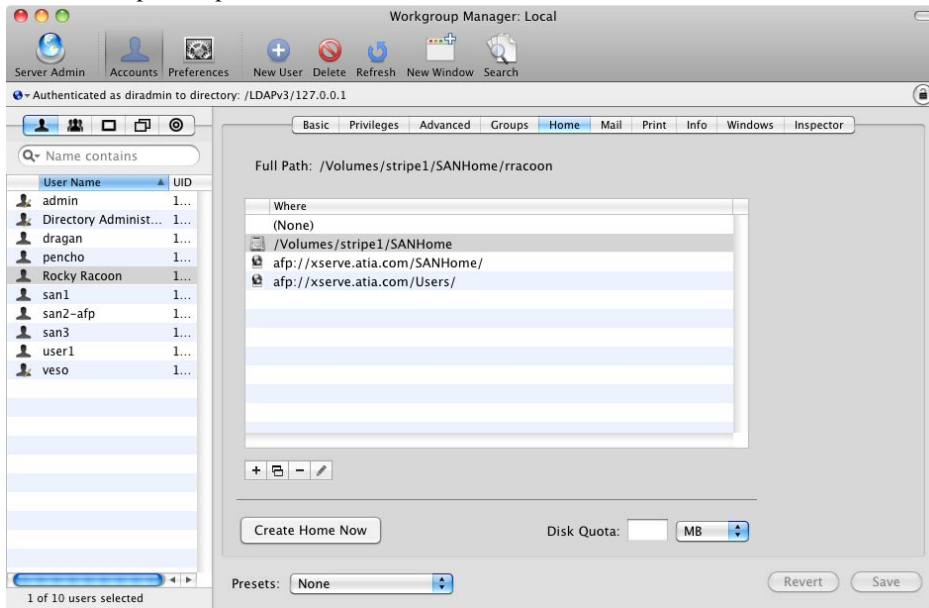
```
sudo createhomedir -c -u username
```

where **username** is the name of the domain user, whose home folder you have changed in Workgroup Manager.

Setting the Home Folders of Mac OS X Domain Users on the SAN

12.In Workgroup Manager, select the user in the left pane and go to Home tab.

If the setup has gone successfully, the new home folder should be listed with “disk” icon instead of afp share path.



Known Limitations

The only way to create home folders on the SAN is to use the command line interface, i.e.

createhomedir -c